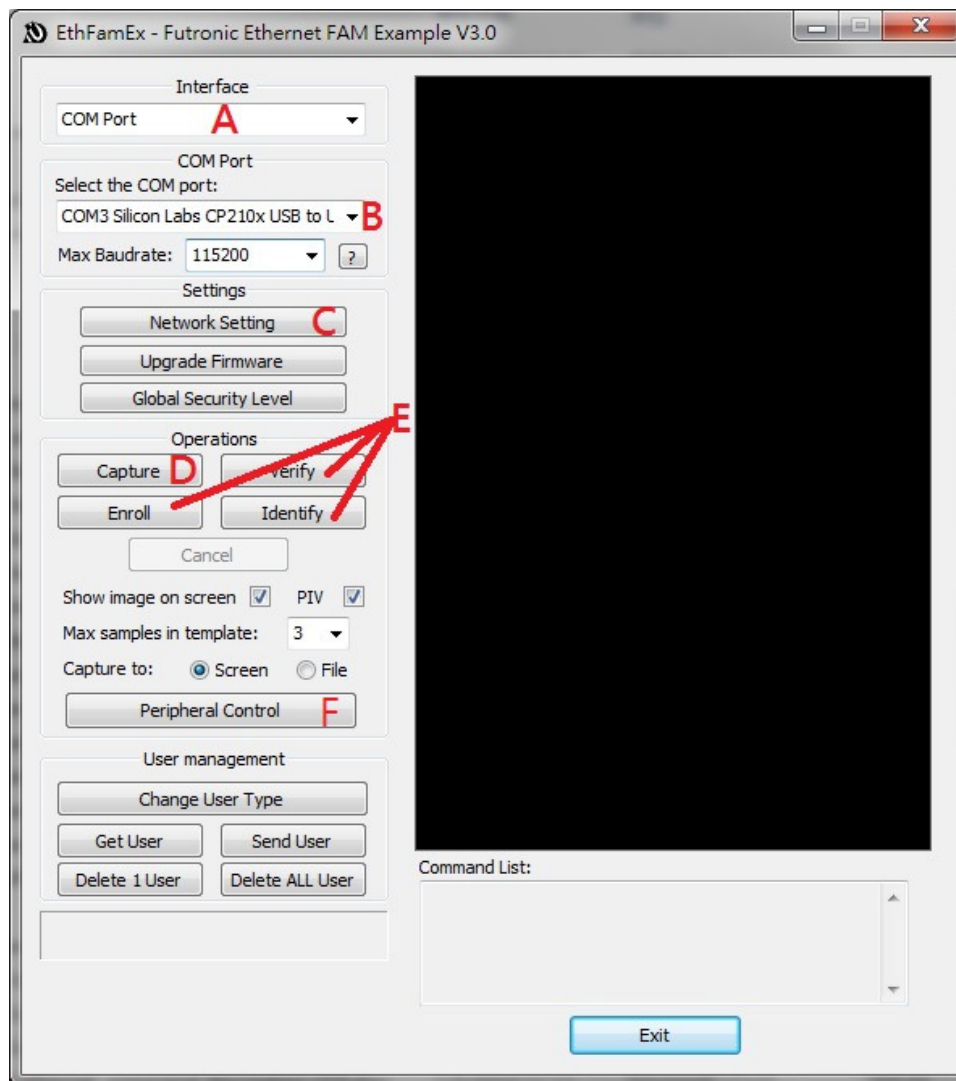


EthFamEx.exe simple user guide



A – User this pull down menu to select the connection method. “COM port” means by RS232 or serial/UART. TCP/IP means by Ethernet. FS83 can only support “COM port”. FS84 can support both.

B – User this pull down menu to select the COM port if FS83/FS84 is connected to PC through RS232.

C – This is only valid for FS84.

D – Use this button to capture a fingerprint image to PC. For PIV image, check the PIV box

E – Use these 3 buttons to enroll and recognize finger with FS83/FS84. For PIV image, check the PIV box.

F – This is only valid for FS84.

Source code of this program is in \Sample_Source\EthFamEx_v3.0